



the

SEABED

MENING

activity

and

coloring book

Imprint

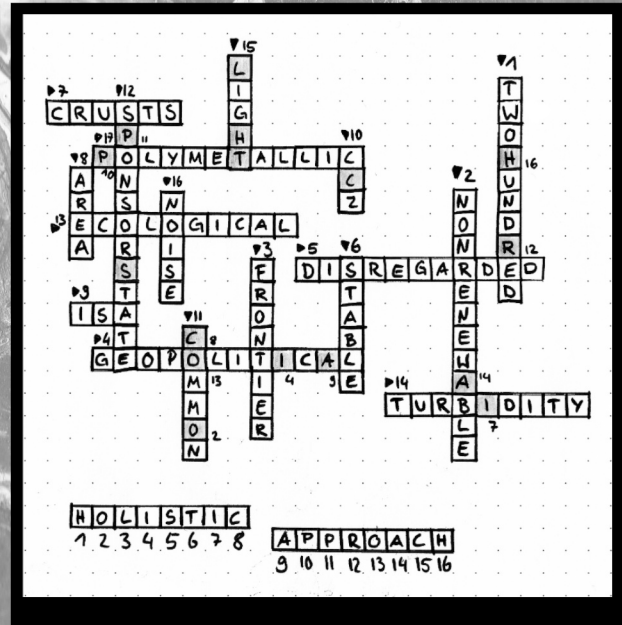
Edition 1, "the Seabed Mining
activity and coloring book"

Marine Political Ecology

Helmholtz Institute for Functional
Marine Biodiversity

Oldenburg, Germany

Contributors: Anne Wolfgramm,
Katherine Sammler, Marie Osterloh,
Katharina Ewald



At the bottom of the sea, with more than two hundred meters of water above, lies the benthic realm, a lively ecosystem of sea worms, crabs, octopuses, and more. For a long time, people thought the seafloor was a vast, flat desert with little life. But now it is known to have great mountain ranges, bubbling volcanoes called hydrothermal sea vents, and much of the floor is covered in ooze made of dead plants and animals that float down from above as marine snow.

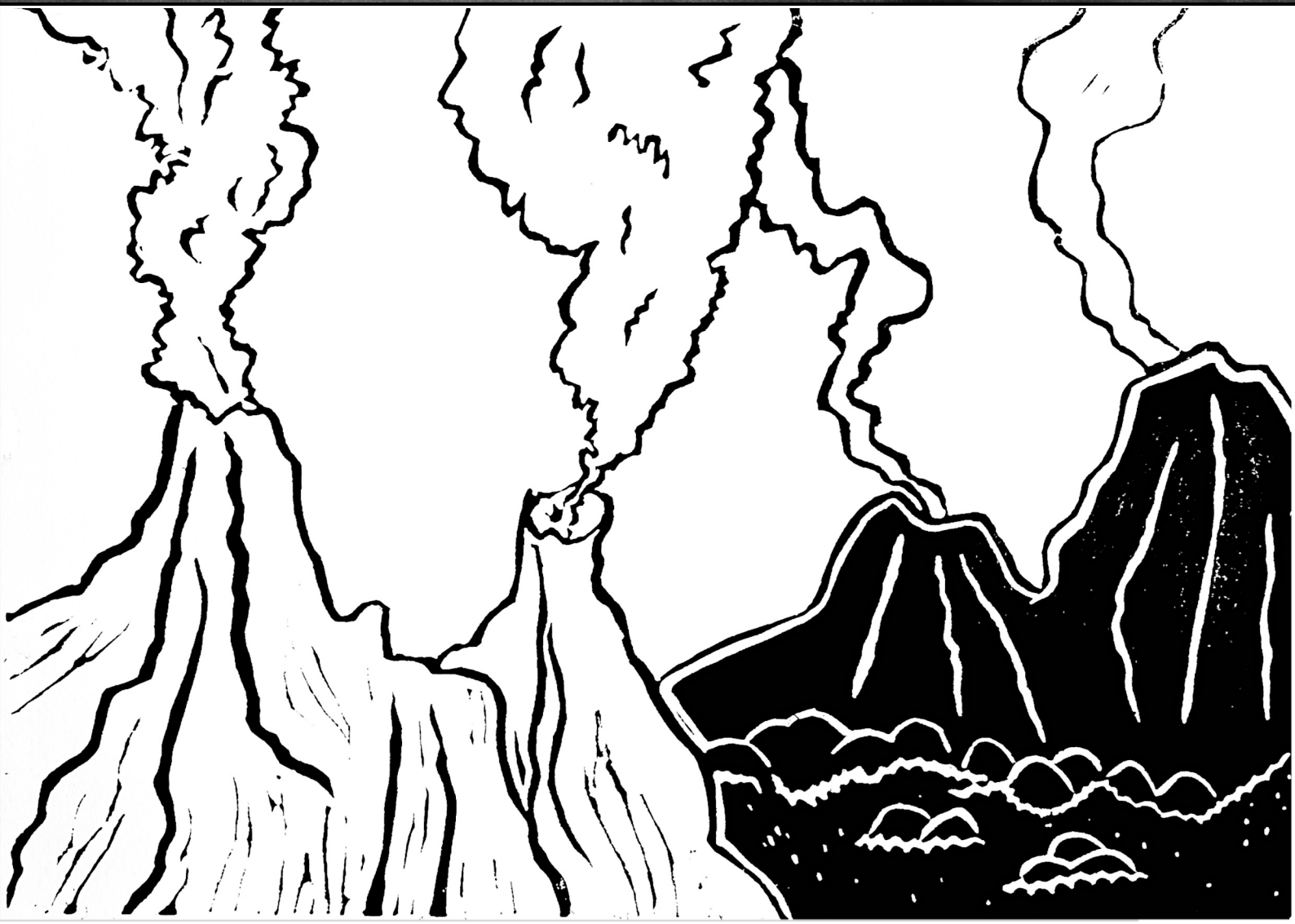


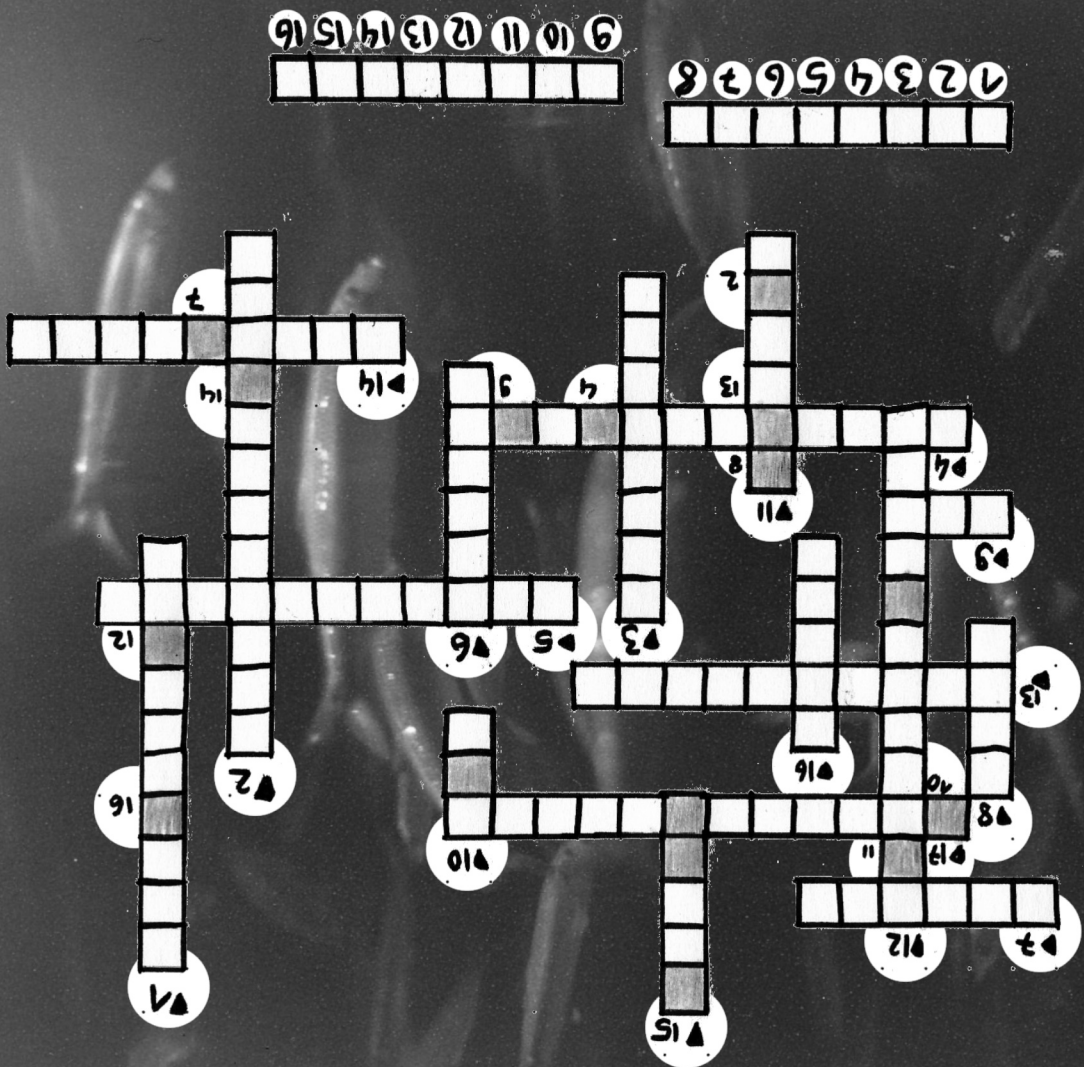
The deep sea is believed to harbor the largest reserves of unknown species, ecosystems, and nonrenewable resources. Just like on land, the rocks and sands under the ocean are made of metals and minerals valuable for their uses in technology like your computer or cellphone. Seabed mining is an experimental industry that wants to remove these ores from the seafloor to sell. Accordingly, deep-sea mining is understandable as a geopolitical object that shapes the global discourse on future resource security, turning the "wilderness" of the deep sea into one of the "last planetary frontiers".

CIVIL SOCIETY GROUPS

CALL FOR..

1. leadership in defending the oceans from harmful industries
2. greater transparency, public consultation processes, and accountability to future generations in all decision-making processes
3. taking responsibility for protecting the common heritage of humankind and stop funding DSM projects through the ISA
4. reviewing government statuses as a sponsoring state
5. unified national strategies against DSM
6. promoting shared sustainable use of marine ecosystems, ensuring the protection of marine ecosystems and fishing grounds
7. an opportunity for civilians to learn about the issue of deep-sea mining and make them aware of the problems
8. a holistic approach to legislation that constantly evolves with the variability of socio-ecological factors and protects the population's interests
9. ensuring legal ecological personhood of the oceans as another means of adequate protection
10. a 10-year moratorium on high-risk, unsustainable deep-sea mining



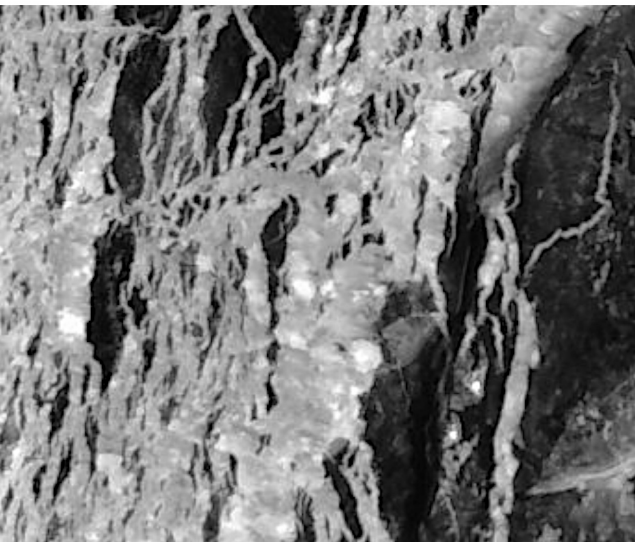
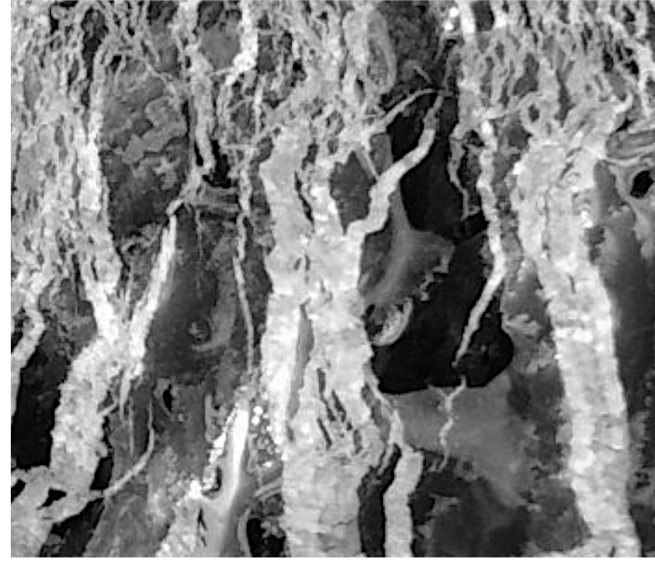


Major targeted mineral deposits include:

1. polymetallic nodules on abyssal plains
2. cobalt-rich ferromanganese crusts on seamounts,
3. and polymetallic sulfides at hydrothermal.

The metals and rare soil compositions contained therein, such as copper, cobalt, nickel, gold, silver, and manganese, are to be mined not only in Exclusive Economic Zones (EEZ) but also in areas of the high seas, referred to as "the Area.". There, solid, liquid, or gaseous mineral resources belong to the common heritage of humankind regulated by the International Seabed Authority (ISA).

1. How deep do ecosystems have to be located below sea level to be part of the deep sea?
2. What characterizes the mineral resource that the deep sea harbors?
3. What is the "wilderness" of the deep sea also called in the context of deep-sea mining?
4. Which feature is attributed to the object of deep-sea mining?
5. What would happen to the environment and socio-cultural structures during deep-sea mining?
6. How can we describe the environmental conditions in the deep sea?
7. How does one of the targeted mineral deposits appear?
8. What are regions of the high seas also known as?
9. What is the name of the main regulatory body in international waters regarding deep-sea mining?

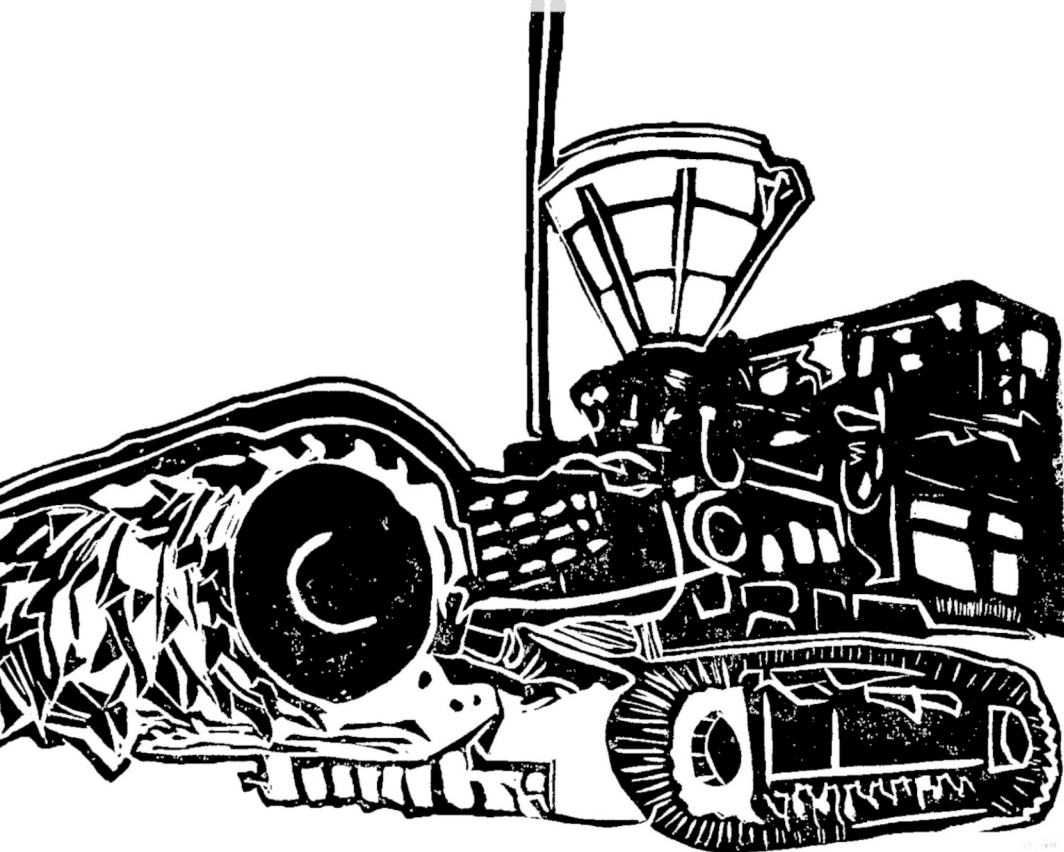


10. What is the abbreviation for one of the most significant mineral resource exploration zones?
11. How is the concept of humanity's heritage described in international waters?
12. What does a private company need to be allowed to mine minerals in international waters?
13. What form of personhood do DSM opponents demand regarding the oceans?
14. What is produced by wastewater discharge plumes?
15. What is artificial and does not occur in the deep sea without mining activities?
16. Which ecological damage could also be increased by deep sea mining?
17. What characterizes the nodules and sulfides on the deep-sea floor?



Although the mining sites seem distant, they are not separate from what happens on land or intangible from spiritual connections. For many oceanic societies, the ocean is a core element of their identity. Many island nations of Oceania are on the front lines of the climate debate and are already experiencing significant disturbances without added threats through deep-sea mining. Therefore, it is likely, that the far-reaching environmental impacts of deep-sea mining will be felt disproportionately in pacific communities.

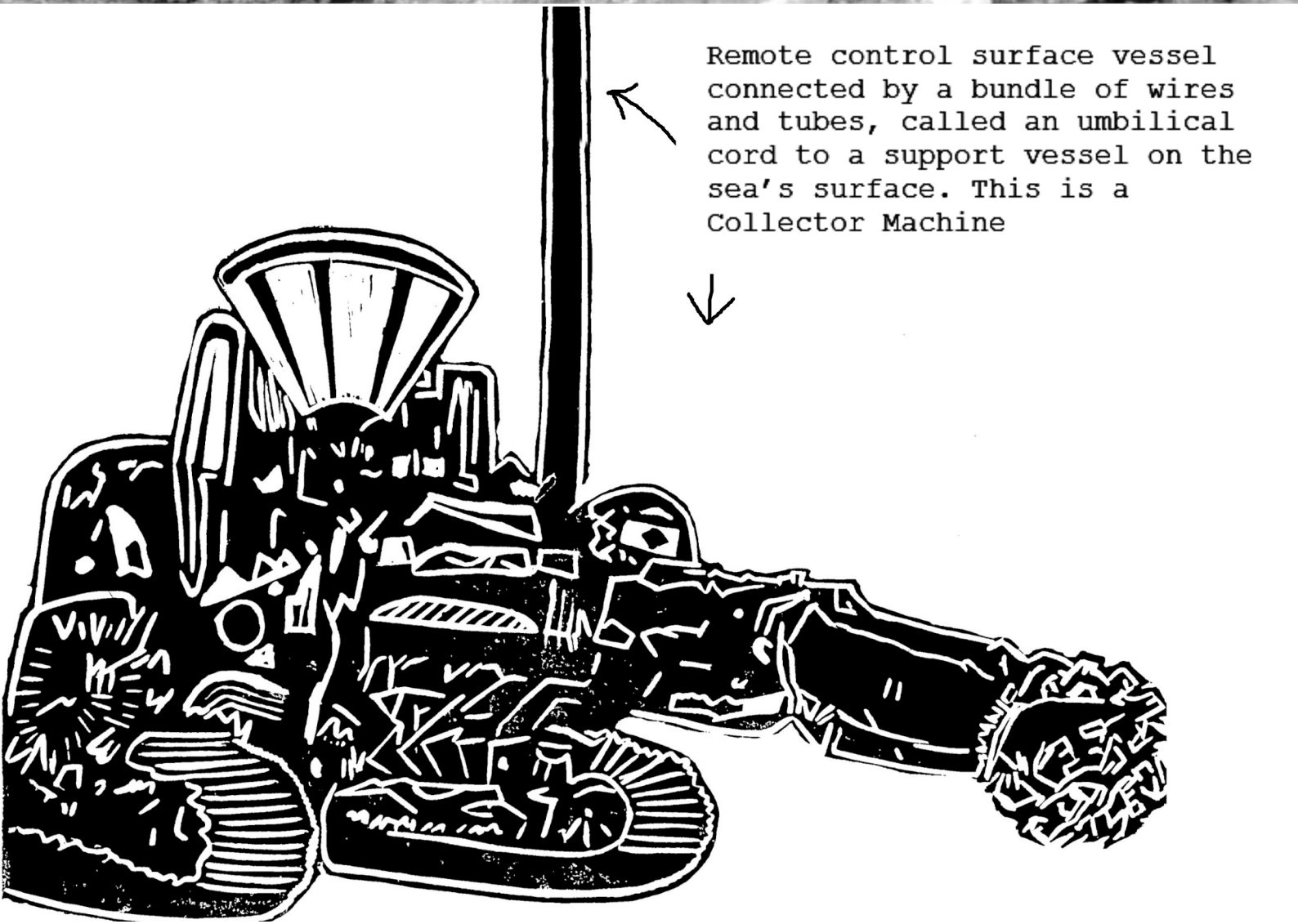
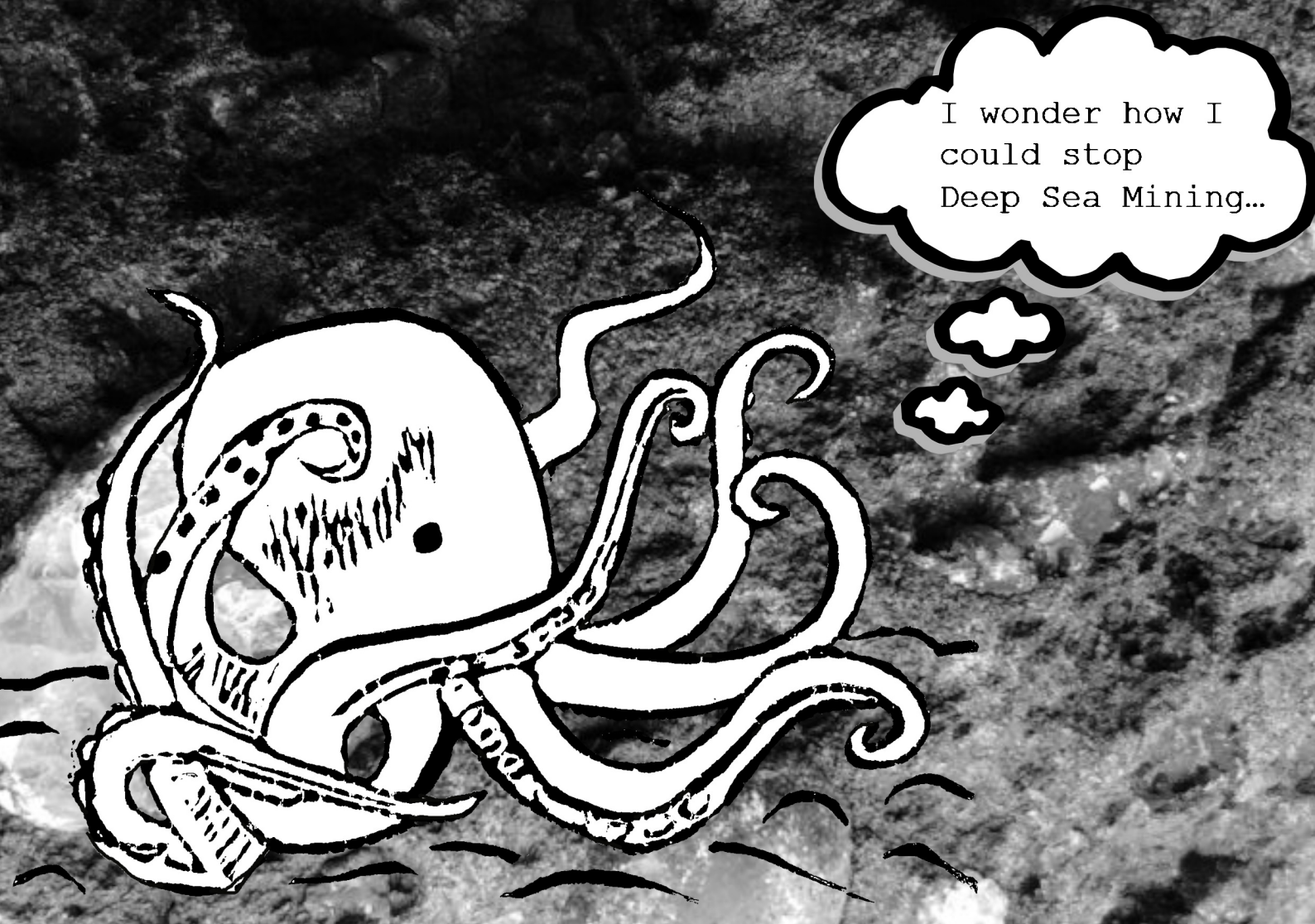
This machine is called a Bulk Cutter, used to cut, and grind the undersea mountains, sea vents, and seafloor.



Here you can draw a small comic on how I could save my home.

Many regions targeted for future seabed mining are also considered sensitive marine ecosystems. These distinctive and unique species communities show that resources cannot be considered in isolation from associated structures in the same habitats. However, existing knowledge gaps regarding deep-sea ecosystems and their interconnectedness with the oceans also mean that the impacts of mining can only be poorly understood.

For the past 27 years, the ISA has been the only authority to ensure sufficient monitoring of mining activities and to decide on exploration licenses based on the Law of the Sea Convention. The certificates are only granted to private mining companies if a certified sponsor state guarantees the venture and provides due diligence. So far, 31 of these licenses have been issued worldwide. Most of them cover sections of the Clarion Clipperton Zone (CCZ) - an area between Hawaii and Mexico with high species richness and biodiversity.

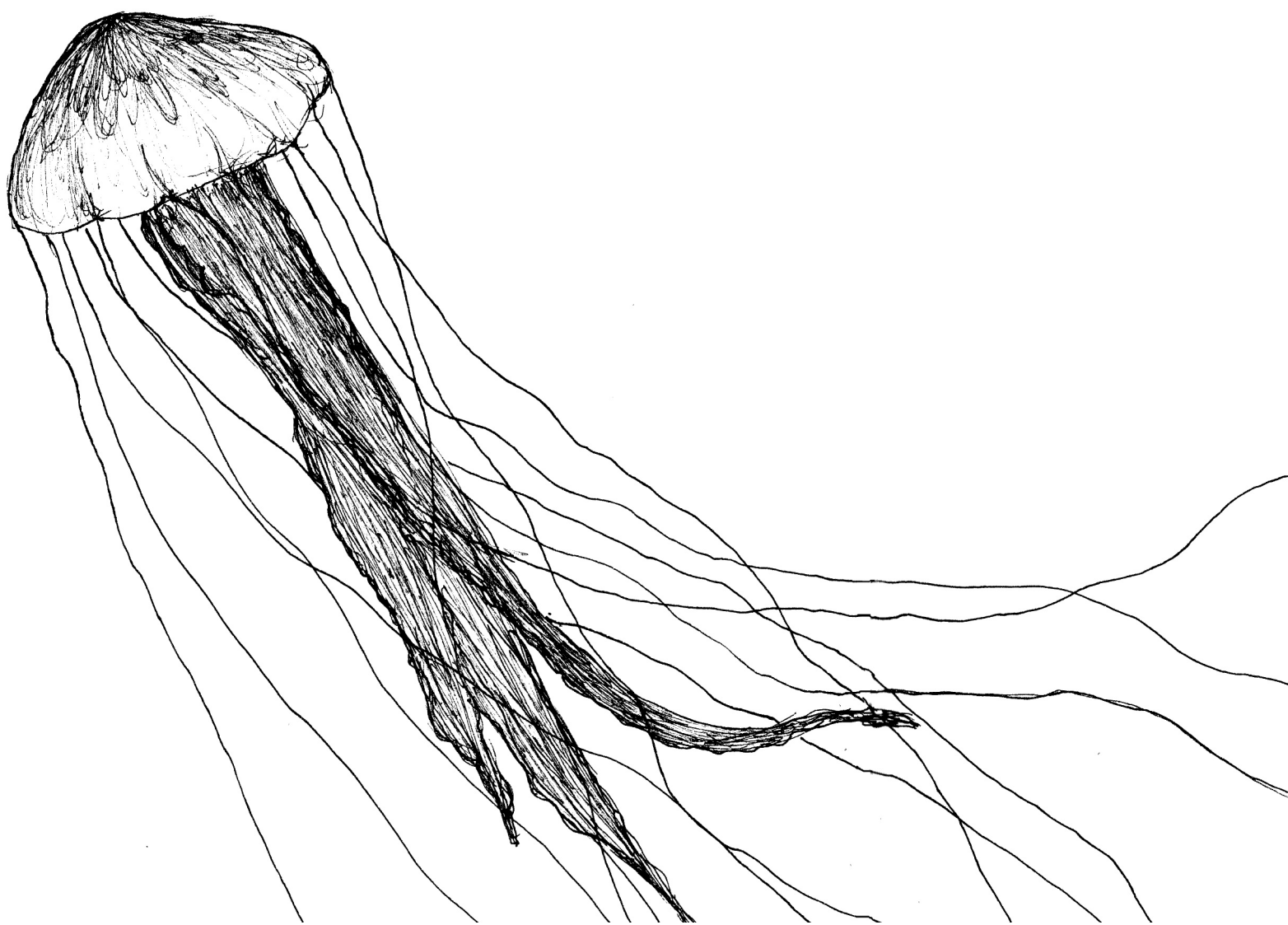


Remote control surface vessel connected by a bundle of wires and tubes, called an umbilical cord to a support vessel on the sea's surface. This is a Collector Machine

Environmental damages might include:

- the destruction of benthic ecosystems and extinction of species throughout the deep sea,
- contamination of the water column and pelagic animals by heavy metals and other toxins,
- sediment or wastewater discharge plumes that can cause severe turbidity even in higher water layers,
- disturbance of existing fauna by artificial light and underwater noise
- possible oil spills and other accidents,
- increasing ocean acidification and increased climate risk posed by an additional release of "blue carbon" stored in the seabed over millennia.





5 YETI CRAB FACTS

1. The Yeti Crab was unknown to scientists until 2005. They were found on hydrothermal sea vents off Easter Island.
2. The yeti crab eats microbes - that grow on its own arms and legs.
3. Yeti Crabs love a crowd, living close together with up to 600 crabs per square meter.
4. Yeti Crabs live in the dark. No sunlight penetrates the deep sea, and their eyes are not fully developed. But their hairy bodies help them sense without seeing.

